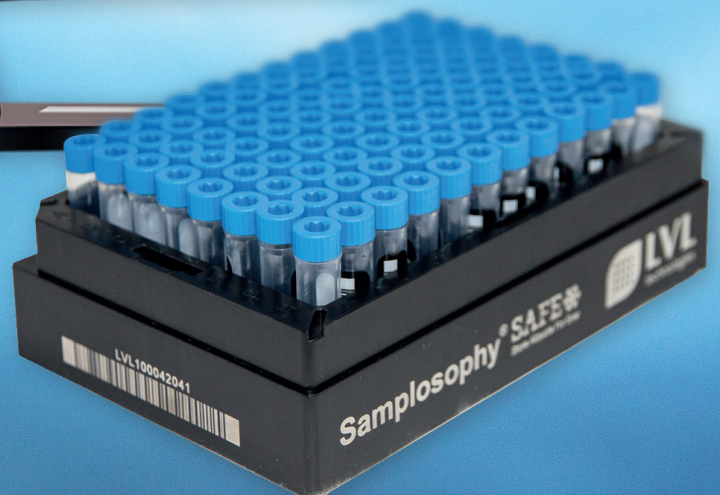


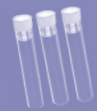
# BIOSAFE® iTrack

Your intelligent sample management

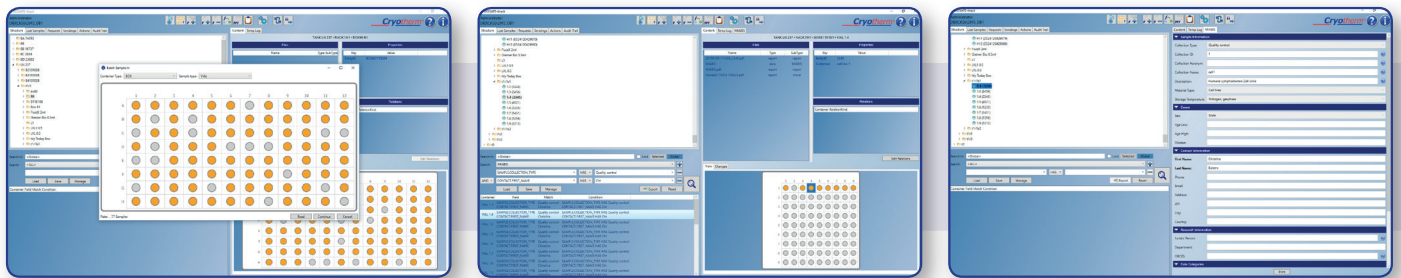


Is a central database administrating the stored samples based on their storage position. It can easily be adapted to the individual needs of a certain bio bank. To each sample necessary basic information and additional user defined information is stored. These may be different data templates, logistics information or process data.

## About the CV of your samples



GXP compliant database, adapted to your needs - not the other way round.



Every biobank has its individual challenges. Samples are stored in different ways at different places. Sample information surely differs from sample to sample. The BIOSAFE® iTrack is a central database administrating the stored samples based on their storage position. It can easily be adapted to the individual needs of a certain bio bank. To each sample necessary basic information and additional user defined information is stored. These may be different data templates, logistics information or process data.

## Flexible solution for your biobank storage location structure

The storage location structure can be configured individually. New storage containers can be structured in different levels so that they represent the real storage facilities.

The storage history is displayed as well. This means that position and sample information of retrieved samples are archived.



### Search function/ web access

The database offers comfortable search functionality.

Samples can be searched with a free text search where entered items will be searched in the entire database. Samples can also be searched in a more structured way with the help of search criteria. The more search criteria are included in a certain search the better search results are narrowed down. Samples can be searched and requested via Web Access using any mobile device.

### Sample information

Every sample has an unique ID to guarantee that each of them has its own audit trail. Individually configurable data templates enable the user to add any relevant sample information to one sample or to a batch.

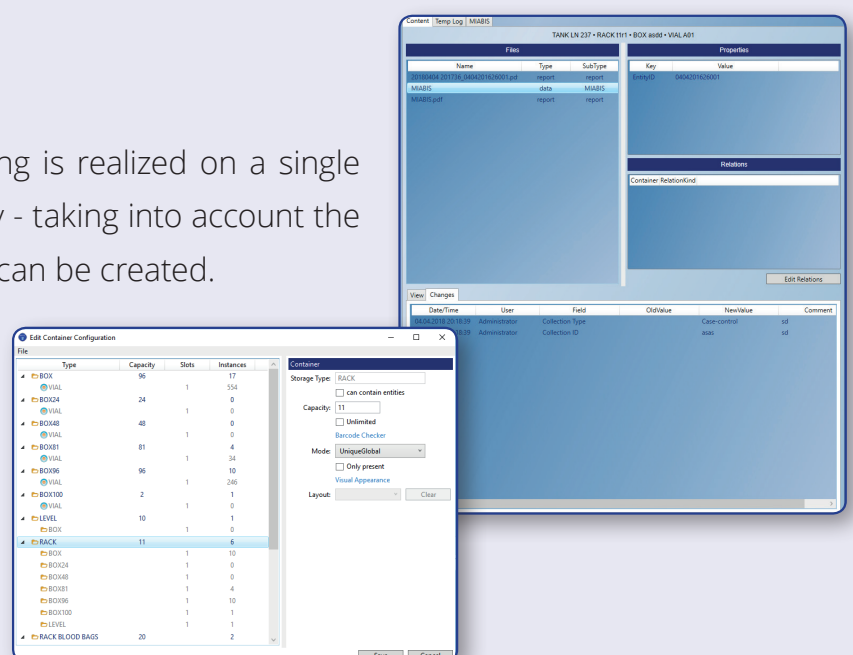
Plausibility checks are possible. For example: the format of a date has to be YYYYMMDD, the sample ID has to be unique and many more.

### Sample retrieval

If samples shall be retrieved from the storage, they can be searched in the database and be put on a retrieval list. Depending on the used storage system the retrieval list can be transferred to an automated storage system or it can be exported in a file or in a printout.

### Temperature logging

Temperature logging and monitoring is realized on a single sample level. A temperature history - taking into account the handling and logistical procedure - can be created.



### Item Numbers



For your BIOSAFE® VENUS we supply various equipment options and extensive accessories.

#### BIOSAFE® iTrack sales

<input checked="" type="checkbox"/> Item Number	
<input type="checkbox"/> 78223030	BIOSAFE® iTrack software
<input type="checkbox"/> 78216916	BIOSAFE® iTrack Premium* Software installation fee (one-off payment)
<input type="checkbox"/> 78216917	BIOSAFE® iTrack Premium* Software installation fee with Webaccess (one-off payment)
<input type="checkbox"/> 78216918	BIOSAFE® iTrackWebaccess optional (one-off payment)
<input type="checkbox"/> 78217135	BIOSAFE® iTrack Premium Plus 3 year Software installation fee (one-off payment)
<input type="checkbox"/> 78217136	BIOSAFE® iTrack Premium Plus 5 year Software installation fee (one-off payment)
<input type="checkbox"/> 78217137	BIOSAFE® iTrack Premium Plus 3 year Webaccess optional (one-off payment)
<input type="checkbox"/> 78217138	BIOSAFE® iTrack Premium Plus 5 year Webaccess optional (one-off payment)
<input type="checkbox"/> 78217140	BIOSAFE® iTrack Premium CAL client access licence (one CAL for up to 5 user)
<input type="checkbox"/> 78217142	BIOSAFE® iTrack Premium Additional User
<input type="checkbox"/> 78217143	BIOSAFE® iTrack Training
<input type="checkbox"/> 78217144	BIOSAFE® iTrack Template Editor

\*The Premium version also includes service assistance. Remote maintenance by telephone or remote access are limited to a maximum monthly hourly rate of three hours within the contract period.

### Your biobank in the overview

- User friendly storage management
- FDA 21 CFR Part 11 compliance
- Sample based temperature logging
- Highest degree of data encryption for your sensitive data
- Developed, tested and documented according to GAMP, ISO 13485, ISO 62304, IEC 62366
- User-defined storage structures/layouts
- Comprehensive storage level access rights
- Barcode scanner and RFID support
- User-defined sample data templates
- Visualisation of storage locations and containers
- Single/Multiple sample check in/out
- Single/Multiple sample data modification
- Comprehensive reporting PDF
- Comprehensive data Exports PDF/CSV
- Multiple IDs possible
- Windows based system
- Multi-site/multi database support
- 2D Flatbed scanner support
- Lab OS Web Access /Customer requests
- Electronic signatures („Four eyes check“ feature)



**55** YEARS **Excellence**  
in Engineering  
1964 - 2019

**Cryotherm GmbH & Co. KG**

Euteneuen 4

D-57548 Kirchen/Sieg, Germany

Telephone: ++49 27 41 / 95 85-0

Fax: ++49 27 41 / 69 00

E-mail: [info@cryotherm.de](mailto:info@cryotherm.de)



**Your local contact person:**

